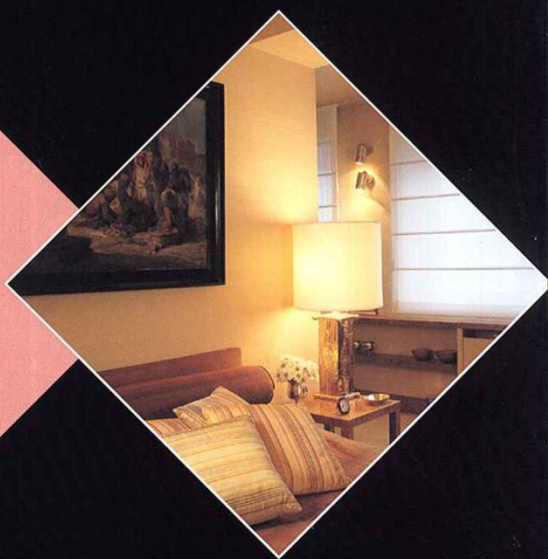


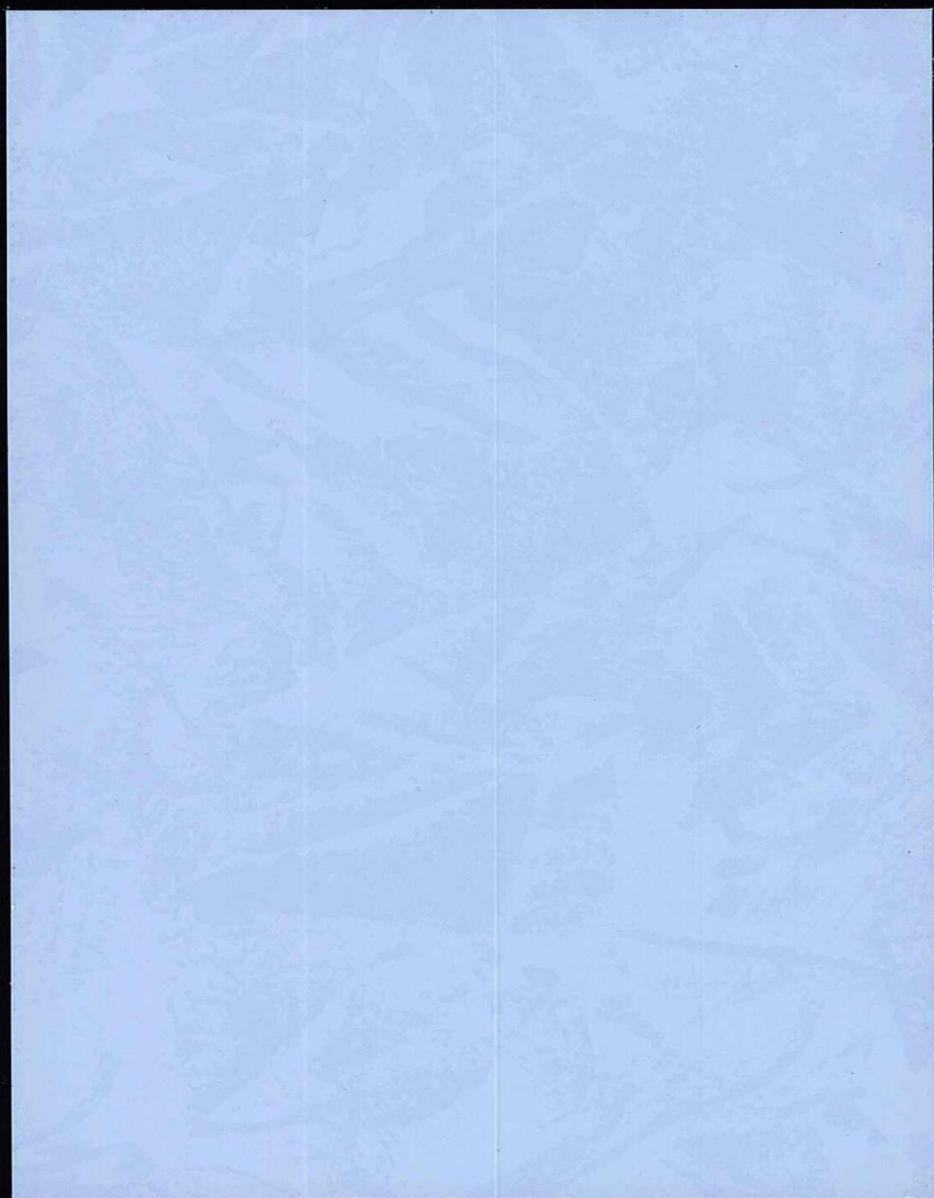
EFFETTI DECORATIVI
SATIN



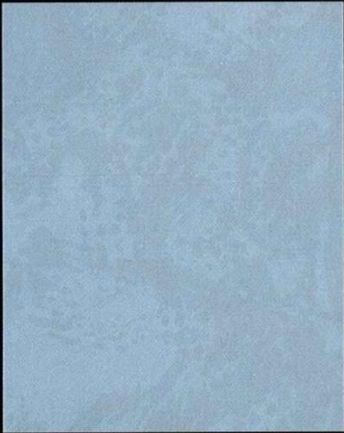
 **MaxMeyer**



S A T I N



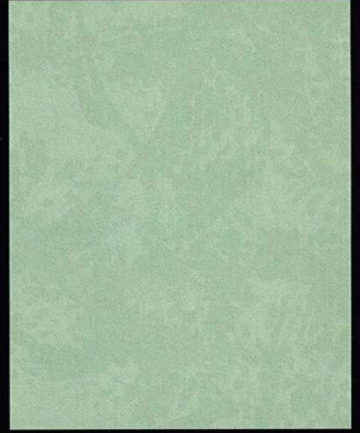
Straccio - Satin 4



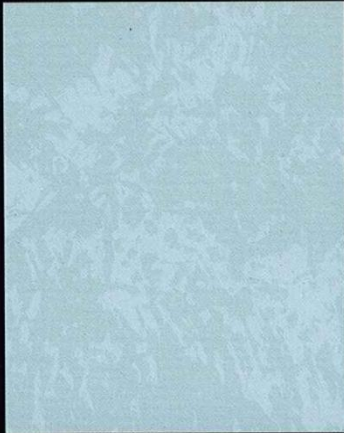
Satin 1



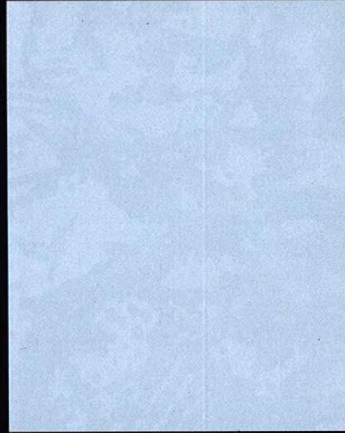
Satin 4



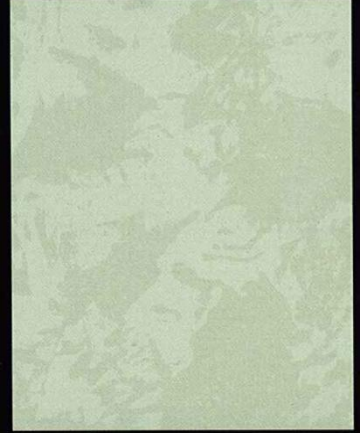
Satin 7



Satin 2



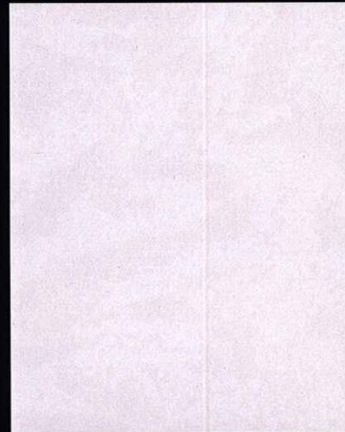
Satin 5



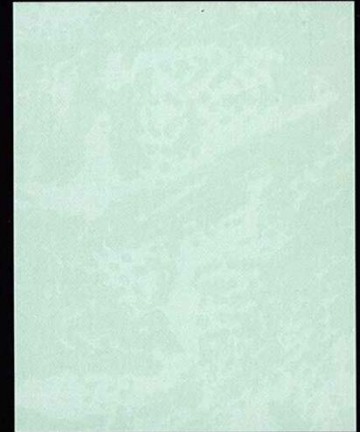
Satin 8



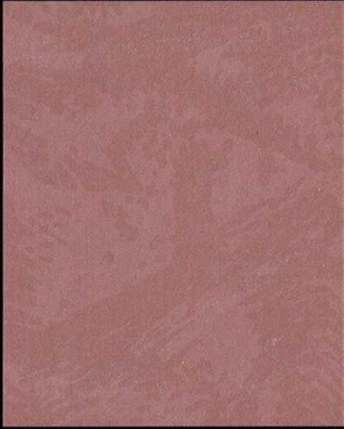
Satin 3



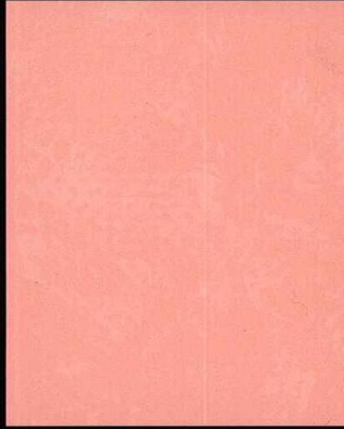
Satin 6



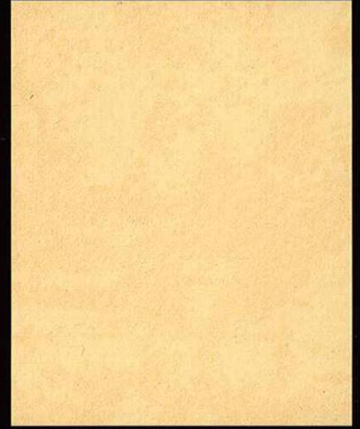
Satin 9



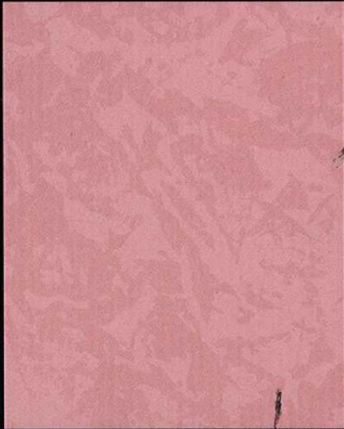
Satin 10



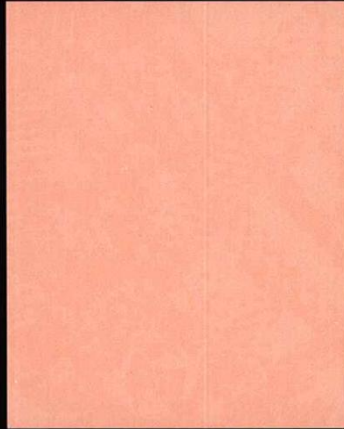
Satin 13



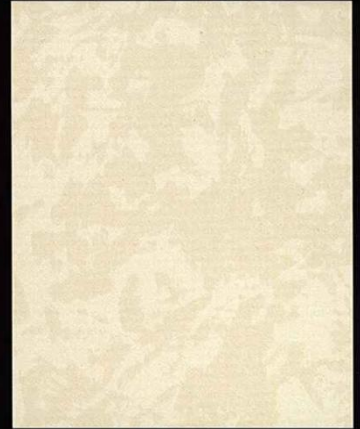
Satin 16



Satin 11



Satin 14



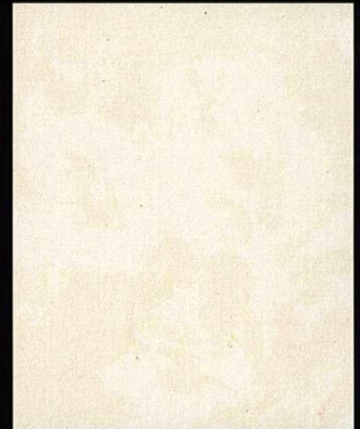
Satin 17



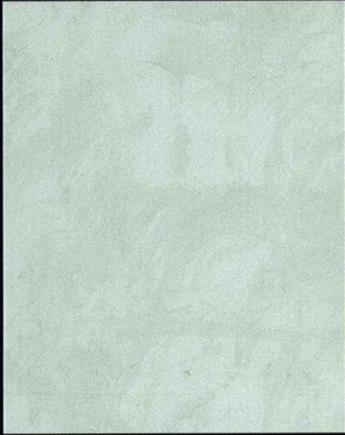
Satin 12



Satin 15



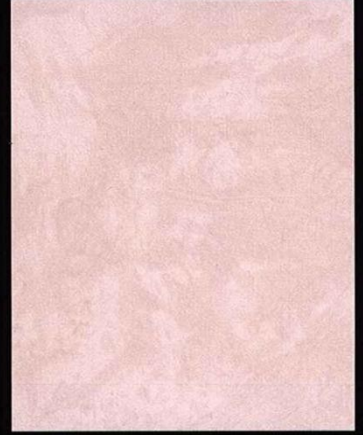
Satin 18



Satin 19



Satin 22



Satin 25



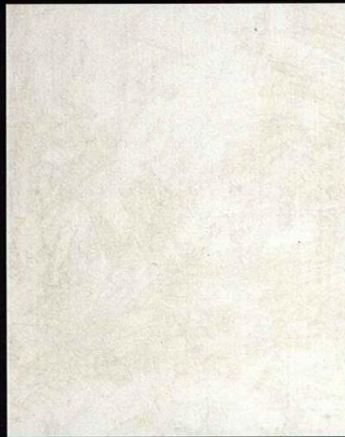
Satin 20



Satin 23



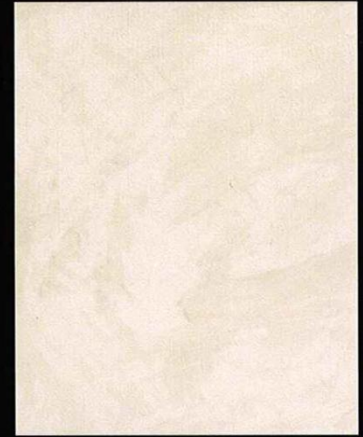
Satin 26



Satin 21



Satin 24



Satin 27

COLORI UTILIZZATI NEGLI EFFETTI DI CARTELLA

Pittura di Base in tinta come mano di fondo per tutti gli effetti			
con sovrapplicazione di Finitura Satinata Trasparente incoloro .		con sovrapplicazione di Finitura Satinata Trasparente grigia .	
Satin 1	Satin 10	Satin 19	Satin 24
Satin 2	Satin 11	Satin 20	Satin 25
Satin 3	Satin 12	Satin 21	Satin 26
Satin 4	Satin 13	Satin 22	Satin 27
Satin 5	Satin 14	Satin 23	
Satin 6	Satin 15		
Satin 7	Satin 16		
Satin 8	Satin 17		
Satin 9	Satin 18		



Finitura Satinata Trasparente

serie 120635

**FINITURA IN GRADO DI
REALIZZARE, SOVRAP-
PLICATA ALLA SPECIFICA
PITTURA DI BASE, UN
EFFETTO ESTETICO PAR-
TICOLARE, DI ASPETTO
SETOSO E MORBIDO AL
TATTO.**

Pittura di Base

serie 120637

**PITTURA CON ELEVATE CARATTE-
RISTICHE DI COPERTURA E RIEM-
PIMENTO, IN GRADO DI REALIZ-
ZARE EFFETTI ESTETICI DALLA
PARTICOLARE SETOSITÀ CON
IL PRODOTTO DI FINITURA
SOVRAPPLICATO.**



Il Rosotto

MAADJO0001

**Attrezzo esclusivo di nuova
creazione per la realizza-
zione di effetti decorativi di
tipo classico e moderno.**

SATIN

FINITURA MONOCROMATICA



1 Dopo aver preparato il muro, applicate una/due mani a rullo o a pennellina della Pittura di Base (componente A) nella tinta prescelta.



2 A completa essiccazione della Pittura di Base, procedete all'applicazione della Finitura Satinata Trasparente (componente B) utilizzando il "Rosotto" ed elaborando l'effetto estetico desiderato.